



GMT MONTHLY MEMBERSHIP PROGRESS REPORT

Results as of: 7/31/2019

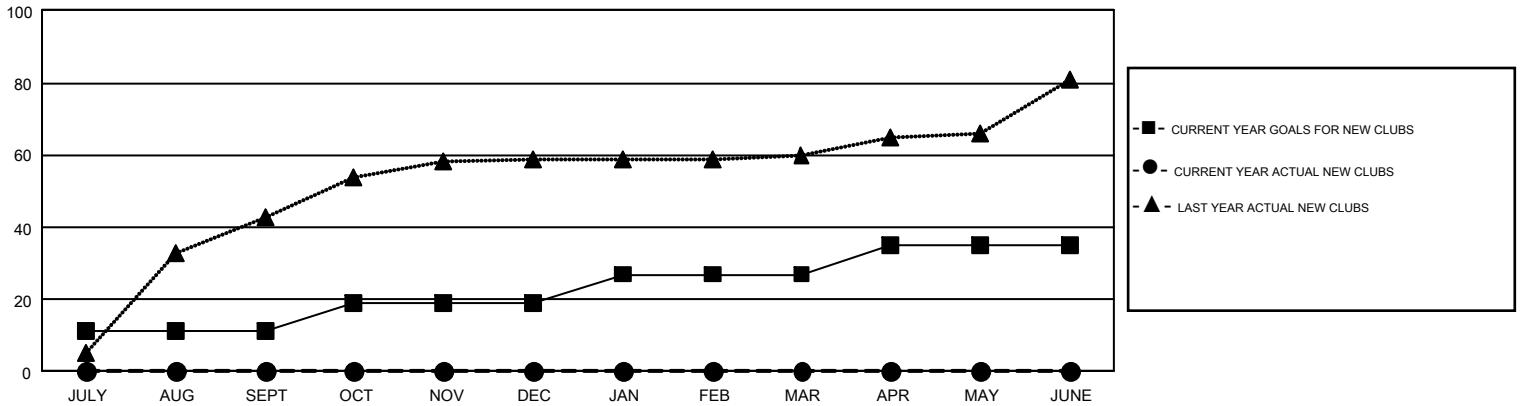
GMT Constitutional Area 7, Group C

GMT: OPEN

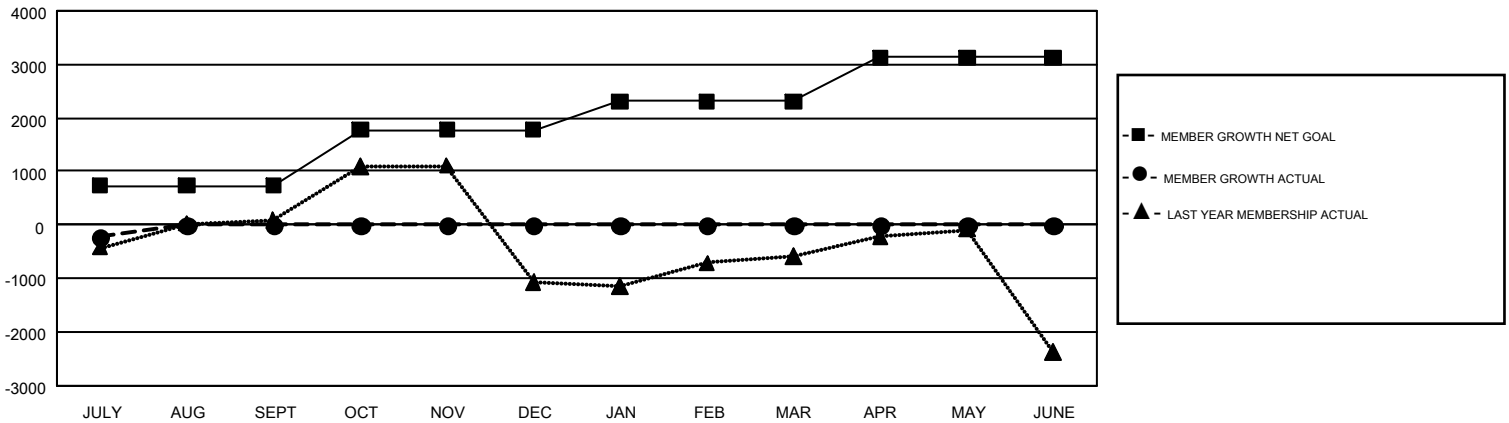
REPORT DOES NOT INCLUDE CLUBS IN UNDISTRICTED AREAS.

Clubs				Members			
RESULTS FOR 2019-2020				RESULTS FOR 2019-2020			
QUARTER	NEW CLUB GOAL	NEW CLUBS	DROPPED CLUBS	QUARTER	MEMBER GROWTH NET GOAL	MEMBER GROWTH ACTUAL	DROPPED MEMBERS ACTUAL (including transfers)
JULY/AUG/SEPT	11	0	16	JULY/AUG/SEPT	730	296	462
OCT/NOV/DEC	8	0	0	OCT/NOV/DEC	1050	0	0
JAN/FEB/MAR	8	0	0	JAN/FEB/MAR	530	0	0
APR/MAY/JUNE	8	0	0	APR/MAY/JUNE	820	0	0

GOALS AND ACTUAL NEW CLUBS CUMULATIVE



GOALS AND ACTUAL MEMBERS CUMULATIVE



DROPPED CLUBS: 16	96 CLUBS OF 652 ADDED 1 OR MORE NEW MEMBERS	<u>GENDER DISTRIBUTION</u>	
<u>DROPPED MEMBERS</u>		MALE	9,341 (48.72%)
DECEASED	5	FEMALE	9,831 (51.28%)
CLUB CANCELLED	0	TOTAL FAMILY UNIT MEMBERS 4,412	
OTHER	457	FAMILY MEMBERS PAYING HALF DUES 2,396	
TOTAL	462		

[CLICK HERE FOR CUMULATIVE MEMBERSHIP DATA](#)